

Reproduced from Ordnance Survey material © Crown copyright 2007.
Cardiff Council 100023376



ST MELLONS

2.3
miles
milltir

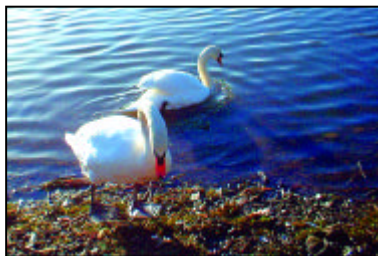
St Mellons DIRECTIONS

Start from Tesco Foyer (A) walk towards car park entrance with the shops on the right, and turn right, into Crickhowell Road at (B). Cross the zebra crossing, turn right, passing St. Arvans Crescent, then Rogerstone Close, and continue straight ahead.

Noting the stream on the right, follow the path with play area on



the left (C). Turn right after the play area, cross bridge and go through the stile passing plaques and posts with markings. Continuing along the path through grass land, go through the stile, bearing right, and then left, following the path to Willow Brook Drive (D). Cross Willow Brook Drive, pass through another stile, and continue along the path up to Hendre Lake.

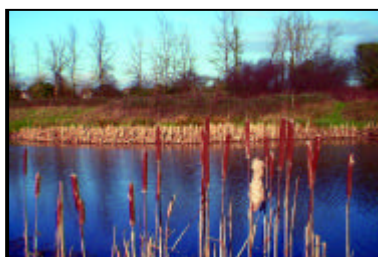


St Mellons DIRECTIONS

Take the route around Hendre Lake and before the bridge, take note of viewing point (access via steps) (E). Cross bridge and continue around the lake and bear right to the second viewing point. For a longer walk you could go around the lake again.

At (F), turn right heading back along the path to Willow Brook Drive (D).

Cross the road and follow the path ahead. At end, bear right then left and pass through the stile. Continue and pass through a second stile, and follow the path, crossing the stream. At (C), turn left and continue along the path, with play area on the right and the stream on left. Follow the path, crossing, Rogerstone Close and St. Arvans Crescent before using the zebra crossing (B) to return to Tesco (A).



St Mellons DETAILS

MANYLI ON Llaneirwg

A pleasant walk along the side of a stream and paths leading to Hendre Lake Park. This is an all-weather walk but there are one or two puddles in inclement weather.

Hendre Lake Park is a newly created park in the St Mellons area of the city. The park has been designed to retain natural features of interest in this ecologically important area.

There is much to see in the form of many rare, protected plants and species, especially relating to the reens (historic ditches that cross the area). The lake habitat adds to the wildlife interest such as cormorants, mallards and swans. Some rare species such as newts can be found in the park.

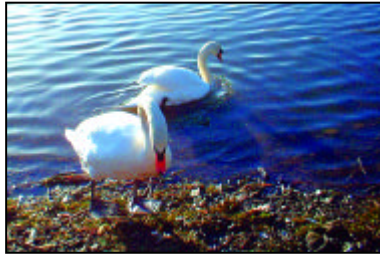
Tro plerusus ger nant a llwybrau'n arwain i Barc Llyn Hendre. Mae hon yn daith ar gyfer pob tywydd ond ceir ambell i bwl mewn tywydd garw.

Parc newydd yw Parc Llyn Hendre yn ardal Llaneirwg o'r ddinas. Dyluniwyd y parc gyda'r bwriad o gadw nodweddion o ddiddordeb yn yr ardal ecolegol bwysig hon.

Mae digon i'w weld yma o ran planhigion a rhywogaethau prin a ddiogelir, yn enwedig o ran y ffosydd draenio (ffosydd hanesyddol ar draws yr ardal). Mae'r llyn yn ychwanegu at y bywyd gwyllt gyda bilidowcar, hwyaid ac elyrch yn cynefino yno. Gellir gweld rhai rhywogaethau prin fel madfallod dŵr yn y parc.

CYFARWYDDI ADAU Llaneirwg

Cychwynnwch o Gyntedd Tesco (A) gan gerdded tuag at fynedfa'r maes parcio, gyda'r siopau ar y dde, a throwch i'r dde am Crickhowell Road yn (B). Croeswch y groesfan sebra, trowch i'r dde, heibio St Arvans Crescent, yna Rogerstone Close, ac yn syth yn eich blaen. Gan sylwi ar y nant ar y dde,



dilynwch y llwybr, sydd â'r lle chwarae ar y chwith iddo (C). Trowch i'r dde ar ôl y lle chwarae, croeswch y bont a thros gamfa gan gerdded heibio'r placiau a'r pyst sydd â marciau arnynt. Ewch ymlaen ar hyd y llwybr trwy'r tir glaswellt, ewch dros y gamfa, gan wyro i'r dde, ac yna i'r chwith, gan ddilyn y llwybr tuag at Willow Brook Drive (D). Croeswch Willow Brook



CYFARWYDDI ADAU Llaneirwg

Drive, dros gamfa arall ac ymlaen ar hyd y llwybr at Llyn Hendre.

Dilynwch y llwybr o amgylch Llyn Hendre a chyn y bont, sylwch ar y man gweld (mynediad ato i fyny'r grisiau) (E). Croeswch y bont ac ymlaen o amgylch y llyn a gwyro i'r dde at yr ail fan gweld. Am dro hirach gallwch fynd o amgylch y llyn unwaith eto.



Yn (F), trowch i'r dde yn ôl ar hyd y llwybr at gyfeiriad Willow Brook Drive (D). Croeswch y ffridd a dilynwch y llwybr o'ch blaen. Ar y diwedd, gwyrwch i'r dde, yna i'r chwith a thros gamfa. Ewch yn eich blaen a thros ail gamfa gan groesi'r nant. Yn (C), trowch i'r chwith ac ymlaen ar hyd y llwybr, sydd â'r lle chwarae ar y dde a'r nant ar y chwith. Dilynwch y llwybr, gan groesi Rogerstone Close a St Arvans Crescent cyn defnyddio'r groesfan sebra i ddychwelyd i Tesco (A).